

Simplex Liquid Filters

HILCO offers a wide variety of standard simplex filter products as well as custom engineered configurations for your individual application. We are an ISO 9001:2015 certified organization with a fully accredited weld shop which gives us the ability to manufacture and test a wide variety of filter arrangements. A range of materials of construction are available as well as a diverse offering of components and certifications based on your unique specifications.

Standard Non-Code Housings.

Well-suited for off-line filtration systems, these housings can be used for o-ring sealed elements as well as Selexsorb, Hilite, Activated Alumina, and Ion Exchange elements. Features o-ring sealed covers, swing bolt cover hardware, carbon steel or 316 stainless construction, and 1" inlet and outlet.

Bag Filter Housings.

Hilco Bag Filter Housings feature o-ring sealed covers, swing bolt cover hardware, carbon steel or 316 stainless steel construction. Suitable for a variety of inlet and outlet configurations. Also available in duplex arrangement.

Standard Housings for High Flow Synthetic Elements

These housings can be used for 312, 414, 518, 720, and 739 elements, for flows up to 2000 gpm. The 3/4" FNPT inlet and outlet are up to 1 O", 150# flanged. Housing features include ASME construction (non-Code also available), o-ring sealed covers, and carbon steel or 316 stainless steel.



▶▶▶ FILTER VESSELS

Duplex Integral Head Liquid Filter

HILCO® offers a wide variety of standard duplex filter products as well as custom engineered configurations for your individual application. Integral Head Duplex designs are available allowing for continuous flow during fluid transfer and cartridge change out. These cost and space saving integral head designs can be manufactured to accommodate liquid or gas pressures up to 3000 PSIG.

We are an ISO 9001:2015 certified organization with a fully accredited weld shop which gives us the ability to manufacture and test a wide variety of filter arrangements. A range of materials of construction are available as well as a diverse offering of components and certifications based on your unique specifications.



DUPLEX FILTERS



Duplex Liquid Filter

HILCO® offers a wide variety of standard duplex filter products as well as custom engineered configurations for your individual application. Duplex full flow designs are available allowing for continuous flow during fluid transfer and cartridge change out with the added benefit of elimination of potential gasket leak points with our welded in valve design. Bolt in valve designs remain available.

Duplex Liquid Filter—Custom Design

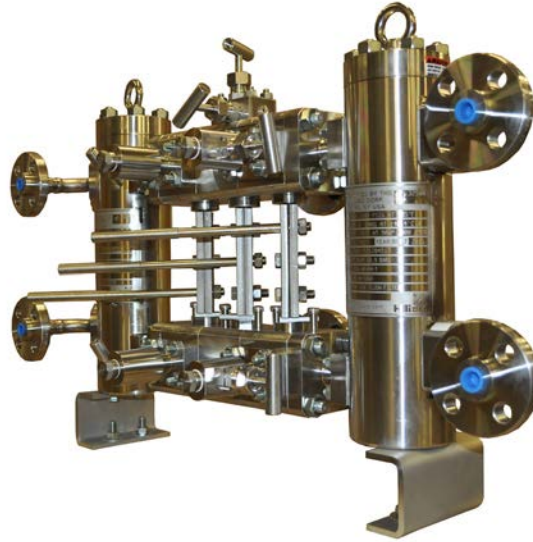
HILCO can design and build liquid filter custom products for your individual application.



▶▶▶ FILTER VESSELS

Seal Gas Filter/Coalescers

HILCO® offers several designs and sizes of seal gas filters for the purposes of particulate and liquid removal. Each one of our units is designed to the requirements provided by the customer. With our many years of experience, we are able to determine the best option for the application whether it is an initial startup or an aftermarket retrofit. HILCO® filters are available in simplex design and in duplex arrangements for continuous operation.

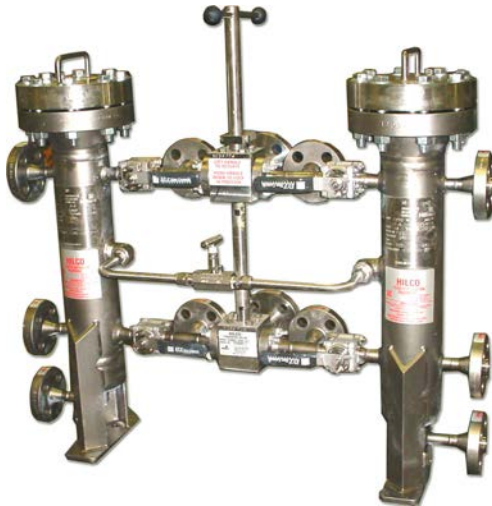


Typical Applications:

- Gas Compression
- Mid Stream Gas
- Natural Gas Pipeline Transmission
- Oil & Gas
- Refinery

Fuel Gas Filter/Coalescers

HILCO® manufactures complete fuel filtration systems which can incorporate all or any combination of these contaminate removal techniques. Put HILCO's expertise to work in solving your most difficult liquid fuel filtration needs.



Typical Applications:

- Oil & Gas
- Power Generation
- Refinery

Strainer Baskets to remove large particulate

For use in place of or in conjunction with Hilco filter cartridges, these strainer baskets are available in 5"x11" and 7"x18" sizes. They are useful as pre-filters for the removal of particles of 75 to 100 micrometers and larger.



DUPLEX FILTERS

▶▶▶ VALVES

HILCO® Transfer Valves

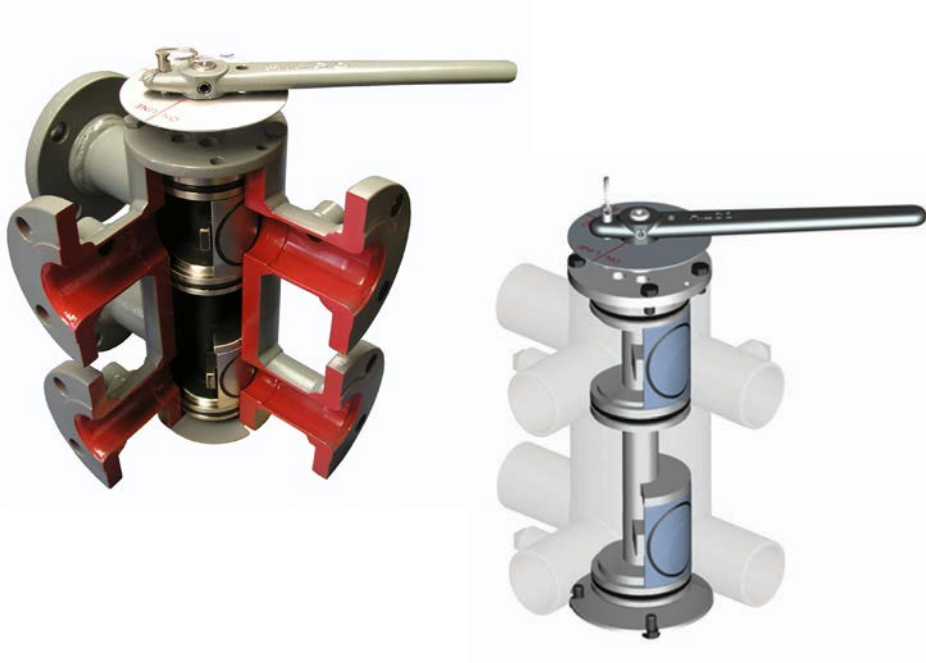
HILCO® Transfer Valves assure positive sealing for uninterrupted flow and a low pressure drop. They feature an innovative spring loaded pad and shaft design with large cross-section o-ring seals. Top and bottom covers with centering pilots provide support to the body to resist deformation from pipe strain. The turning mechanism features a choice of handle, wormgear or actuator designs to meet your requirements.

HILCO® also manufactures 3-way valves coupled together with a common actuator and handle for duplex cooler applications. This helps to minimize extensive piping runs previously required while at the same time, reducing overall costs.



Six-Port Standard

HILCO® Transfer Valves are available in three configurations: three-way, six-port (same side and opposite side), and split three-way. Spring and pressure loaded pad design instead of plug—provides positive sealing to minimize leakage. Rugged, precision-machined, straight body heavy wall steel tubing for body material—minimizes valve distortion.



Same Sided



Straight Through

▶▶▶ VALVES

Split Transfer Valve

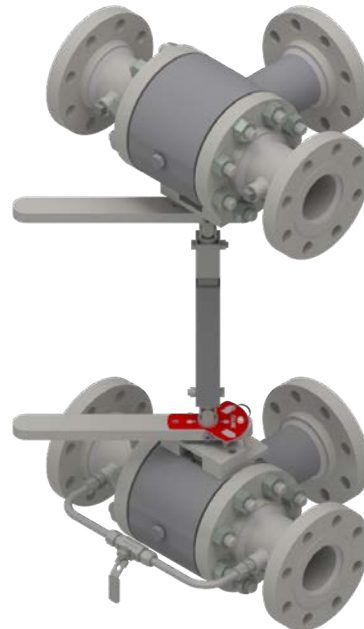
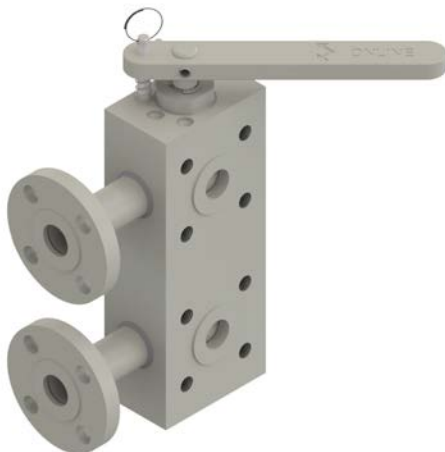
HILCO Transfer Valves are available in three configurations: three-way, six-port (same side and opposite side), and split three-way. Spring and pressure loaded pad design instead of plug—provides positive sealing to minimize leakage. Rugged, precision-machined, straight body heavy wall steel tubing for body material—minimizes valve distortion.



Ball Valves

3-Way and 6-Way Ball Valves

Like HILCO Transfer Valves, HILCO Ball valves provide uninterrupted flow during transfer of fluid. Unlike Transfer Valves, which are limited to liquid service, HILCO Ball Valves are available for both liquids and gases. They can provide sealing for API-598 Class II for liquid service and ANSI FC170-2 Class VI for gas service. They are available in Carbon Steel and 316 SS with PEEK seats and Viton o-rings as standard.



▶▶▶ PORTABLE FILTERS

Portable Filters and Filter Systems

HILCO® portable filters are an economical solution for removing water and particulate from oils, fuel and other fluids. Filters can be built to ASME Code standards. HILCO® portable filters can be used for many different fluids, including: Mineral-based lubricating, hydraulic, and insulating oils, synthetic lubricating and hydraulic (EHC) fluids, fuel oils, kerosene, gasoline, ethylene glycol mixes, solvents, coolants and cutting oils, vacuum pump oils.

Every customer using lube and hydraulic oil needs a means to transfer, treat, and/or filter it. HILCO® filtration systems are available in many sizes and flow ranges with options to make them easy to use and handle. Available with air-powered pumps as well as motor driven gear pumps, they can be used with any standard HILCO® cartridges, including Hilsorb® dryer elements, which absorb water from oil while removing solids.



HILCO® Single Cartridge



HILCO® HP4

HILCO's HP4 Off-line Filtration System

is competitively priced, features reasonably priced high efficiency elements, and has the heavy-duty construction you expect from HILCO®. The HILCO® HP4 offers a variety of elements to remove particulate and water. Cartridges are available in inexpensive cellulose or ultra-efficient synthetic medias. Cartridges constructed of HILCO's proprietary PD media to remove water and particulate to 3 micron are also available.



HILCO® 2 High Cartridge

▶▶▶ OIL MIST ELIMINATORS

The HILCO® mist eliminator removes visible oil vapor from the air stream of vents in lubricating oil systems of large, high-speed rotating equipment such as gas turbines, steam turbines, turbo compressors, turbo generators, reciprocating engines, high speed couplings and gear boxes. The mist eliminator prevents oil mist from contaminating air or soil, helping facilities comply with environmental regulations. It also makes for a cleaner, safer work environment by eliminating oily residue build-up on engine room floors, enclosures and stairwells, while improving indoor/outdoor air quality and reducing fire hazards.

The HILCO® mist eliminator also saves money by returning oil to the sump that would normally be lost during the venting process, greatly reducing make-up costs. There are currently three versions available: Blower Assisted, Mist Eliminator with Heat Exchanger, and a Coalescer-Only model. All models eliminate oil mist with an efficiency of 99.97% removal of all airborne contaminant regardless of particle size.



▶▶▶ OIL MIST ELIMINATORS

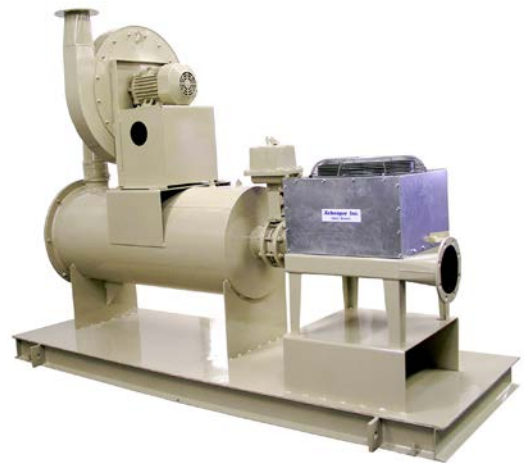
Blower-Assisted Mist Eliminator:

This model is designed for oil systems that cannot withstand back pressure or where back pressure may not be desirable. It can be installed with an airflow-restriction device to pull vacuum. It is also designed to maintain atmospheric condition in the oil system.



Mist Eliminator with Heat Exchanger:

This model is often used where the oil can reach excessively high temperatures (200° F and above). By cooling the air stream, the oil mist becomes easier to coalesce and therefore more efficient.



ELIMINATE CRANKCASE EMISSIONS

Non Blower-Assisted Oil Mist Eliminator:

This model is appropriate for use where back pressure on an oil system is not a concern. It can be sized large enough to meet pressure-drop requirements. It also can be used where an existing blower is present to assist flow.

Visible plume is defined as particles in the 0.3- to 0.5-micron-size range. The technically advanced, designed, and constructed Hilco® coalescing mist eliminator elements are 99.97% efficient down to 0.3 microns and have a MERV rating of 16.



ADVANTAGES

- Ease of Use / Operation
- Simplicity
- Easy to Maintain
- OEM Specified
- Self Regulating — Do Not Require Constant Monitoring

INDUSTRIAL MARKETS

- Electronics
- Automotive
- Food and Beverage
- Textile
- Paper and Pulp
- Iron and Steel

BENEFITS

- Removes Visible Plume
- Ensures Environmental Compliance
- Reduces Oil Make-Up Cost
- Keeps Surfaces Oil-Free

FEATURES

- Compact Design
- Easy to Install
- Quick Element Replacement
- High Efficiency
- Minimal Flow Resistance

Mist Eliminator Applications

Gas & Steam Turbine Applications
Rolls Royce / Allison
Dresser-Rand
GE Frame Engines
GE Aeroderivatives
Solar Turbines
Pratt & Whitney
Mitsubishi
Siemens Westinghouse



Reciprocating Engine & Compressor Applications

Caterpillar
Dresser-Rand
GE Frame Engines
Cooper
Ingersoll-Rand
MAK
Superior
Waukesha
White